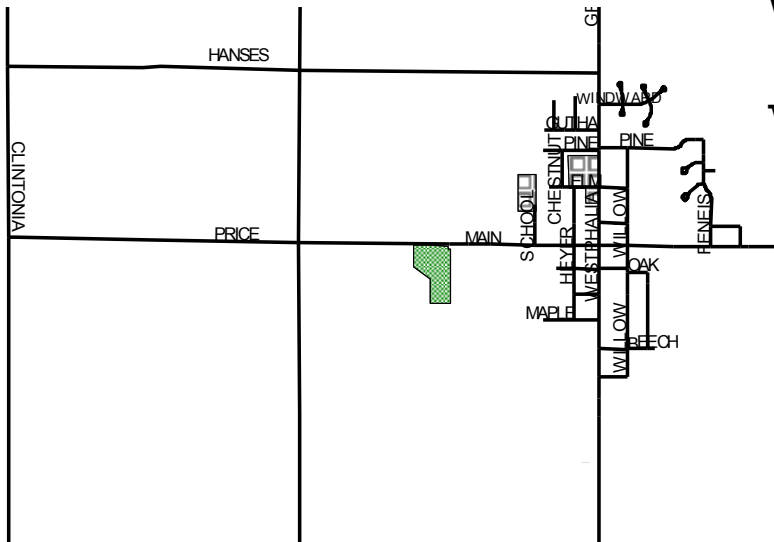


**THIS SITE WILL CLOSE MAY 29TH, 2014  
AND WILL REOPEN IN THE FALL**

**PEWAMO/WESTPHALIA RECYCLING  
DROP-OFF CENTER GUIDELINES**

The Pewamo/  
Westphalia drop-off site  
is located at Pewamo/  
Westphalia High School  
on Clintonia Rd. The  
drop-off site is a self  
serve center open  
24-Hours.



**Open 24-Hours**



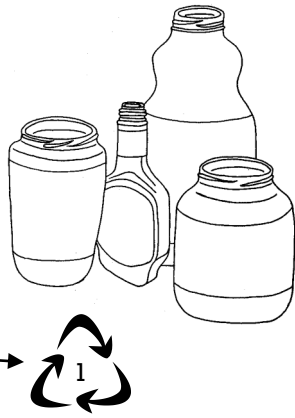
Please see other side of flyer  
for items accepted for  
drop-off and how to properly  
prepare them.



→  
For more information about  
the drop-off center, please  
contact Clinton County  
Department of Waste  
Management at 989-224-5186  
or at  
[recycle@clinton-county.org](mailto:recycle@clinton-county.org).

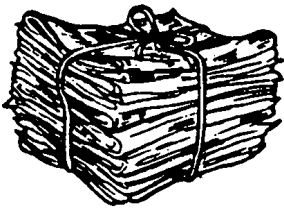
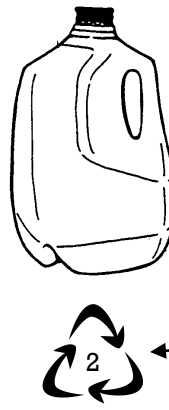
**PETE or PET #1  
Plastic Bottles &  
Jars**

Please remove lid and lightly rinse containers. Look for symbol on bottom of container.



**HDPE #2 Plastic  
Bottles & Jugs**

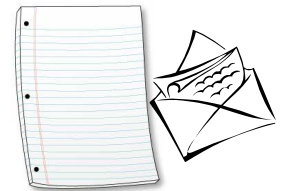
Must have a seam on the bottom and sides. All colors accepted. **SORRY!** No motor oil or pesticide containers. Look for symbol on bottom of container.



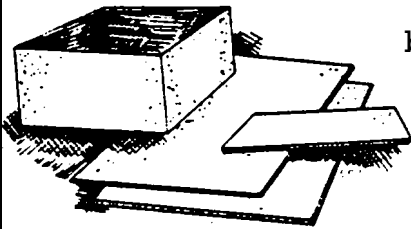
**Newspaper & Inserts**  
No separating or sorting required. Do not put newspapers in plastic bags!

**Mixed Office Papers**

Includes white, notebook, colored paper and envelopes.



**Corrugated Cardboard & Boxboard**  
Must have wavy corrugation in middle.



Sorry! No boxboard or wax coated boxes accepted. Remove all packaging materials.

**Phonebooks**

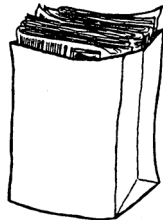


**Magazines &  
Glossy  
Catalogs**



**Brown Paper Bags**

Sorry! No wax coated bags. Place in newspaper bin.



**Empty!! Aerosol  
Cans**

Please remove lids.



**Clear & Brown glass jars  
and bottles ONLY!**

Remove caps and lids and place those in garbage. Labels may be left on and lightly rinse container. **SORRY!** We do not accept drinking glasses, light bulbs, window glass, mirrors, ceramics, dishes and cookware.

**Metal Cans &  
Aluminum**

Steel, tin, aluminum and bi-metal cans and aluminum foil. Labels may be left on and containers need to be lightly rinsed. **SORRY!** We do not accept scrap metal or other metals.

