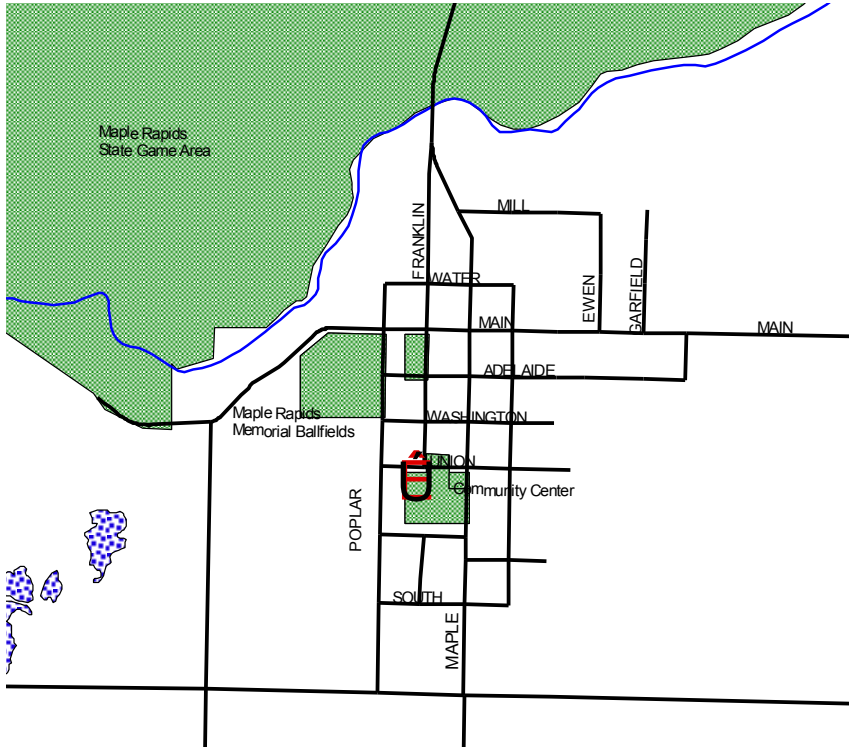


MAPLE RAPIDS RECYCLING DROP-OFF CENTER GUIDELINES



The Maple Rapids drop-off center is located on Union St. next to the Community Center. The drop-off site is a self serve center open 24-Hours.

Open 24-Hours



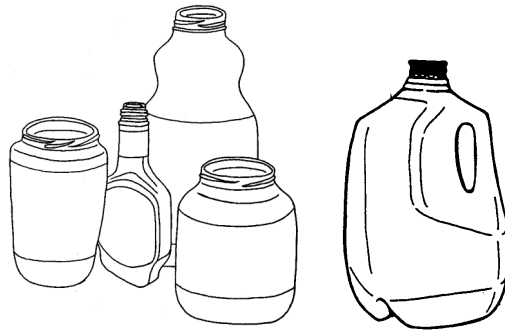
Please see other side of flyer for items accepted for drop-off and how to properly prepare them.



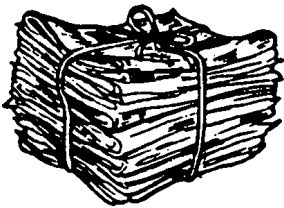
→
For more information about the drop-off center, please contact Clinton County Department of Waste Management at 989-224-5186 or at recycle@clinton-county.org.

All household Plastics #1— #7

Please remove lid and lightly rinse

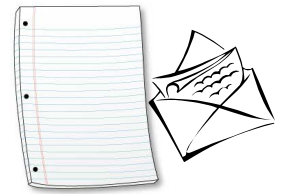


SORRY! No motor oil or pesticide containers.
Look for symbol on bottom of container.

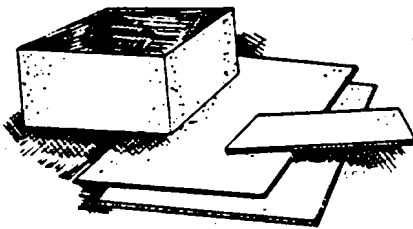


Newspaper & Inserts
No separating or sorting required. Do not put newspapers in plastic bags!

Mixed Office Papers
Includes white, notebook, colored paper and envelopes.



Corrugated Cardboard & Boxboard
Must have wavy corrugation in middle.

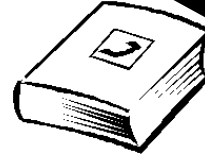


Sorry! No wax coated boxes accepted. Remove all packaging materials.

Phonebooks

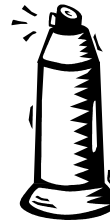


Magazines & Glossy Catalogs



Brown Paper Bags

Sorry! No wax coated bags. Place in newspaper bin.



Empty!! Aerosol Cans

Please remove lids.



Clear & Brown glass jars and bottles ONLY!

Remove caps and lids and place those in garbage. Labels may be left on and lightly rinse container. **SORRY!** We do not accept drinking glasses, light bulbs, window glass, mirrors, ceramics, dishes and cookware.

Metal Cans & Aluminum

Steel, tin, aluminum and bi-metal cans and aluminum foil. Labels may be left on and containers need to be lightly rinsed. **SORRY!** We do not accept scrap metal or other metals.

