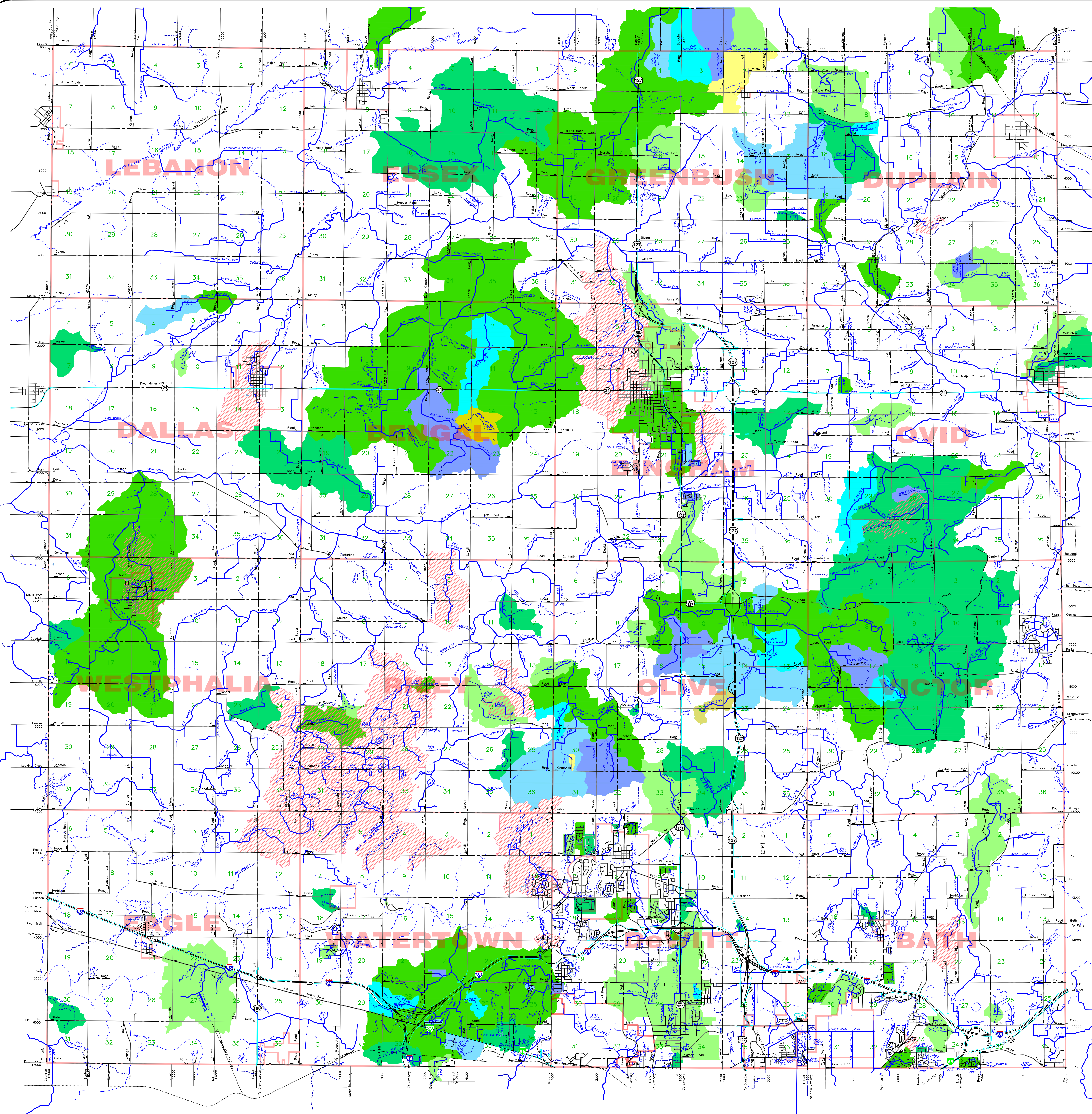


# Clinton County Drainage Map

## Showing Drainage Districts Being Assessed in 2025



### NOTES

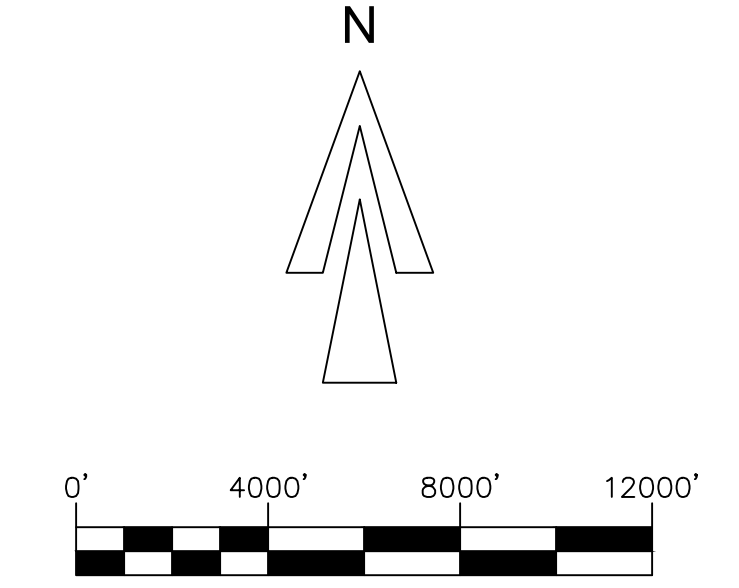
Dotted Hatch areas represent ongoing multi-year assessments from prior year(s).

Brown shaded areas represent districts being assessed along with three other larger districts.

Yellow shaded areas represent districts being assessed along with two other larger districts.

Blue shaded areas represent districts being assessed along with one other larger district.

Green shaded areas represent districts assessed without any tributary districts assessed along with them.



### LEGEND

- COUNTY DRAIN (OPEN DITCH)
- COUNTY DRAIN (TILE)
- ABANDONED COUNTY DRAIN TILE
- PRIVATE DRAIN (TILE)
- PRIVATE (OPEN) DRAIN OR NATURAL WATERCOURSE
- PIPELINE
- ROAD CENTERLINE W/RIGHT OF WAY LINES
- PARCEL NUMBER
- QUARTER SECTION NUMBER
- SECTION NUMBER
- MAJOR WATERSHED BOUNDARY
- COUNTY PRIMARY ROADS - SURFACED
- COUNTY PRIMARY ROADS - GRAVEL
- SURFACED LOCAL ROADS AND STREETS
- LOCAL ROAD
- STATE & U.S. TRUNK LINES
- PRIVATE ROAD

DRAIN #	DRAIN NAME	YEARS ASSESSED
25175	ANDRES DRAIN	2025
25031	ARBOR MEADOWS DRAIN	2025
25029	BALDWIN & MUSKIE DRAIN	2025
25033	BARRIS DRAIN	2025
14332	BATH HIGHWAY DRAIN	2014-2025
25134	BELKMAN INTERCOUNTY DRAIN	2025-2044
25044	BERRY DRAIN	2025
25047	BICKNER INTERCOUNTY DRAIN	2025-2044
25038	BINGHAM/COMMERCE DRAIN	2025
25033	BLACK & GREEN DRAIN	2025-2028
25035	BLIZZARD DRAIN	2025
25030	BOFFS DRAIN	2025-2028
25012	BONITON BRANCHES DRAIN	2025
25037	BRAY DRAIN	2025
25039	BROOKLYN BRANCHES DRAIN	2025
25032	BROWN & TRAVIS DRAIN	2025
25038	BURKE DRAIN	2025
25028	C.O. ORME MEIER DRAIN	2025
18960	CARTER & BURKE AND BRANCH DRAIN	2018-2027
25400	CHURCH INTERCOUNTY DRAIN	2025
24411	COFFMAN DRAIN	2024-2025
25413	COLE DRAIN	2025
197-25426	COUNTY LINE INTERCOUNTY DRAIN	2025
25428	COX DRAIN	2025
25095	CRENSHAW DRAIN	2025
25089	CRIFPINS BROOK DRAIN	2025
25077	CREEPER FARM DRAIN	2025
19438	CUTLER & EXTENSION DRAIN	2015-2025
25442	DEAN DRAIN	2024-2025
24441	DEAN DRAIN	2024-2025
25093	DEER CREEK BRANCHES DRAIN	2025
25007	DEWITT FOUR SEASONS DRAIN	2025
25483	E BACH & BRANCHES DRAIN	2025
25482	FEAZEL & EXTENSION DRAIN	2025
25481	FELDMAN INTERCOUNTY DRAIN	2025
25485	FELDMAN DRAIN	2025
25487	FELDES DRAIN	2025
197-25488	FELDMAN INTERCOUNTY DRAIN	2025
25009	FOLKERS DRAIN	2025
25005	FOLKERS DRAIN	2025
25007	GARLOCK DRAIN	2025-2028
25010	GILSON DRAIN	2025-2028
25012	GILSON DRAIN	2025
25015	GLASSER DRAIN	2025
25018	GOODER DRAIN	2025
25021	GRAVES AND DEWITT DRAIN	2025
25022	GREEN DRAIN	2025
25023	GREENBUSH & DUPLAN DRAIN	2025
25024	GREENBUSH & DUPLAN NORTH BRANCH DRAIN	2025
197-25024	GREENBUSH (NO. 26) INTERCOUNTY DRAIN	2025
25025	GROCKER DRAIN	2025
25026	GUTHALL AND MORRIS DRAIN	2025
25032	HALL DRAIN	2025
25034	HANK TOWN DRAIN	2025
25035	HARRIS DRAIN	2025
25027	HAWK HOLLOW EAST DRAIN	2025
25029	HAWK HOLLOW WEST DRAIN	2025
25051	HENDERSON DRAIN	2025
25053	HENDERSON DRAIN	2025
25054	HERSCHEM DRAIN	2025
25013	HERTZOG GLEN DRAIN	2025
25055	HOLLEN DRAIN	2025
25064	HOPF DRAIN	2025
25075	HURD DRAIN	2025
25076	HURD DRAIN	2025-2025
25083	KEENE & PEASBODY DRAIN	2025-2025
25087	KIDD DRAIN	2025-2025
25089	KINNEY DRAIN	2025
25094	KLOCKNER & FULLER CREEK DRAIN	2025
25007	KUPFA DRAIN	2025
14020	LEE BRANCH OF DENBISHIRE DRAIN	2024-2025
25013	LESTER DRAIN	2025
25008	LORA INTERCOUNTY DRAIN	2025-2028
25056	LUTON DRAIN DRAIN	2025
25038	MAYER & GARLOCK DRAIN	2025
25061	MAYSON DRAIN	2025
25062	MAYSON DRAIN	2025
25064	MAYSON DRAIN	2025
25065	MAYSON DRAIN	2025
25066	MAYSON DRAIN	2025
25067	MAYSON DRAIN	2025
25068	MAYSON DRAIN	2025
25069	MAYSON DRAIN	2025
197-25070	MORSE INTERCOUNTY DRAIN	2025-2025
197-25070	MORSE (NO. 28) INTERCOUNTY DRAIN	2025-2025
197-25071	MUNSEL & JACKSON INTERCOUNTY DRAIN	2025
197-25072	NO. 11 INTERCOUNTY DRAIN	2025
25088	NORTH SWAGART DRAIN	2025
25087	OLKANE AND HILLS DRAIN	2025
25086	OLIVER FISH & BRANCHES DRAIN	2025-2025
197-25074	OLIVE LAKE INTERCOUNTY DRAIN	2025
14005	PARK LAKE LAKE LEVEL	2014-2025
25022	PERKINS DRAIN	2025
25032	PORTER SMITH DRAIN	2025
25058	PRINCE CREEK & GARDNER LAKE DRAIN (LEPPER)	2025
25047	REBE DRAIN	2025
25059	RIDDLE BRANCH OF BENNETT DRAIN	2025
25060	REIDENOUR DRAIN	2025
25063	ROBERTSON DRAIN	2025-2028
25064	ROBERTSON DRAIN	2025
24773	SCHUMER DRAIN	2024-2025
25075	SCHUMER DRAIN	2025-2028
25079	SCOTT & BRYAN DRAIN	2025
25080	SHAWLEY DRAIN	2025
25081	SILM DRAIN	2025-2025
25081	SMITH & SUTTON DRAIN	2025
25087	SMITH DRAIN (SMITH & BEELEY)	2025-2027
25090	SOMERSET HILLS BRANCHES DRAIN	2025
25092	SOMERSET PARK DRAIN	2025
25093	SOUTH WALKER BR. DRAIN	2025
25094	SPERRY, IRISH & STEVENS DRAIN	2025
25095	SPRINGBROOK HILLS DRAIN	2025
25097	SPRINGBROOK HILLS EAST DRAIN	2025
25029	ST CLAIR DRAIN	2025
25027	STUBBS BROOK DRAIN	2025
25035	STATE HIGHWAY #7 DRAIN	2025
25040	STEELE & WALLBROOK DRAIN	2025
25044	STONE RIVER DRIVE DRAIN	2025
25001	SUMNER LAKE DRAIN	2025-2025
25002	SUMNER LAKE DRAIN	2025-2025
24873	TIBBETTS EXTENSION DRAIN	2024-2025
25066	TIMBER RIDGE DRAIN	2025-2028
25080	TURKEY CREEK DRAIN	2025-2025
25080	TURKEY CREEK DRAIN	2025-2025
25081	TURKEY CREEK DRAIN	2025-2025
25085	VALLEAU DRAIN	2025
25083	VICTOR HIGHWAY DRAIN	2025
18987	WALTON & STURGE DRAIN	2019-2027
25097	WATSON & SUMMERS DRAIN	2025
25098	WATSON DRAIN	2025
19913	WEST PHALA & RILEY DRAIN	2020-2025
25099	WHITEHILLS LAKE NORTH DRAIN	2025
25001	WICKERMAN DRAIN	2025
24029	WILLIAM M SMITH DRAIN	2024-2025
25099	WILLIAM M SMITH DRAIN	2025
25005	WYNN FARMS DRAIN	2025
25002	WYNN FARMS DRAIN	2025
25080	WYNN FARMS DRAIN	2025
197-25001	WOOLEY INTERCOUNTY DRAIN	2025-2028