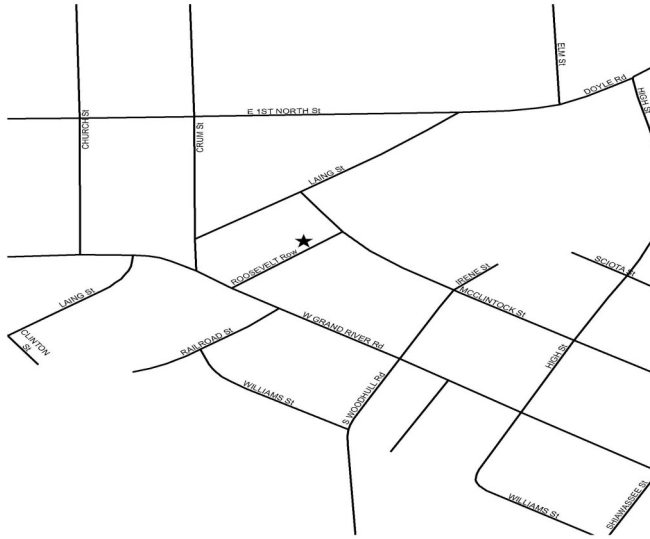


LAINGSBURG RECYCLING DROP-OFF CENTER GUIDELINES



Laingsburg drop-off is located on Roosevelt Row, downtown Laingsburg. The site is open from 9am-1pm the 2nd Saturday of every month. There is no collection in May.

**For more information please contact
Ellen or Terry Link at (517) 651-2005.**



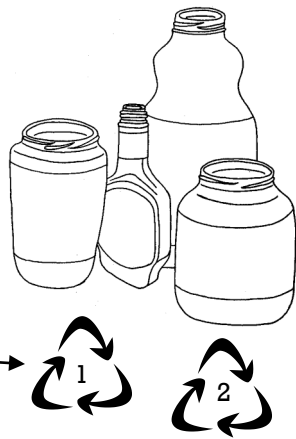
Please see other side of flyer for items accepted for drop-off and how to properly prepare them.



→
For more information about the drop-off center, please contact Clinton County Department of Waste Management at 989-224-5186 or at recycle@clinton-county.org.

**#1—#7
Plastic Bottles,
Jars & Tubs**

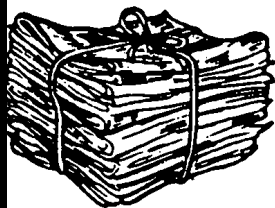
Please remove caps & lids and lightly rinse containers. Look for symbol on bottom of container.



All colors of plastic bottles, jars and tubs accepted. **SORRY!** No motor oil, automotive fluid containers, polystyrene or plastic bags

**\$3 Donation
Appreciated!**

SCRAP METAL
No fuel or Freon tanks. Wire fencing must be cut into 3X3 ft. sections or be in >12" dia. rolls. Call us for specifics.

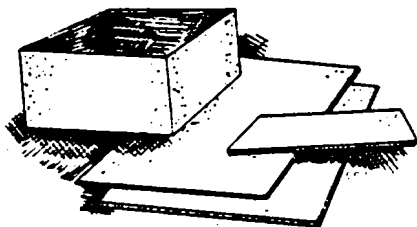


Newspaper & Inserts
No separating or sorting required. Can be combined with phonebooks

Mixed Office Papers

Includes color paper, junk mail (with windows), manila folders, cardstock and envelopes.

NO: crayon, paint, rubber bands, adhesives (tape, labels, rubber cement) or tissue paper.



Cardboard & Boxboard

Include brown paper grocery bags here

METALS

Steel food containers - remove labels & rinse clean. Paint cans must be empty. Aluminum foil, trays, cans (clean), lawn chairs, etc. No mylar.



**Magazines &
Catalogs &
Books**

GLASS

Rinse clean, remove lids. All colors now accepted. **NO** safety, automotive, laminated or tempered glass.

NO: mirrors, drinking glasses, dishes, cookware, lightbulbs or perfume containers.



COMPUTERS & ELECTRONICS

No CRT monitors. Most plug-in items are accepted.

HOUSEHOLD BATTERIES

Separate rechargeables and lithiums from regular batteries. No automotive or engine batteries.