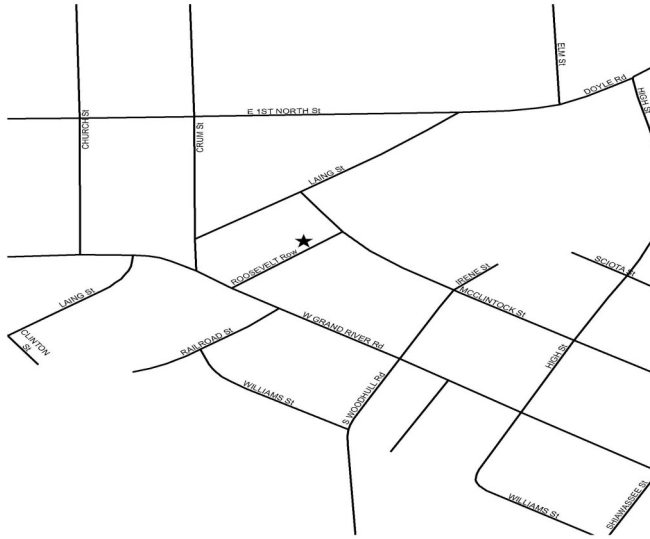


# LAINGSBURG RECYCLING DROP-OFF CENTER GUIDELINES



Laingsburg drop-off is located on Roosevelt Row, downtown Laingsburg. The site is open from 9am-1pm the 2nd Saturday of every month. There is no collection in May.

**For more information please contact  
Ellen or Terry Link at (517) 651-2005.**



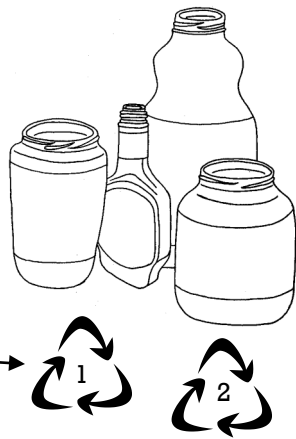
Please see other side of flyer for items accepted for drop-off and how to properly prepare them.



→  
For more information about the drop-off center, please contact Clinton County Department of Waste Management at 989-224-5186 or at [recycle@clinton-county.org](mailto:recycle@clinton-county.org).

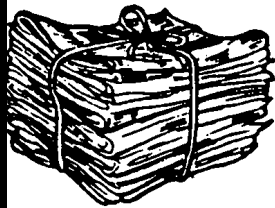
**#1—#7  
Plastic Bottles,  
Jars & Tubs**

Please remove caps & lids and lightly rinse containers. Look for symbol on bottom of container.



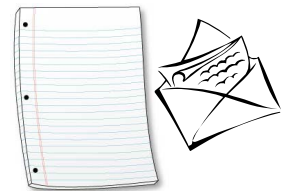
All colors of plastic bottles, jars and tubs accepted. **SORRY!** No motor oil or pesticide containers.

**\$3 Donation Appreciated!**



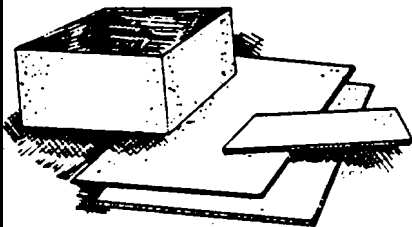
**Newspaper & Inserts**  
No separating or sorting required. Do not put newspapers in plastic bags!

**Mixed Office Papers**  
Includes white, notebook, colored paper and envelopes.



**Corrugated Cardboard**

Must have wavy corrugation in middle.



Sorry! No boxboard or wax coated boxes accepted. Remove all packaging materials.



**Magazines & Glossy Catalogs**



**Empty!! Aerosol Cans**

Please remove lids.

**Clear & Brown glass jars and bottles ONLY!**

Remove caps and lids and place those in garbage. Labels may be left on and lightly rinse container. **SORRY!** We do not accept drinking glasses, light bulbs, window glass, mirrors, ceramics, dishes and cookware.



**Metal Cans & Aluminum**

Steel, tin, aluminum and bi-metal cans and aluminum foil. Labels may be left on and containers need to be lightly rinsed. **SORRY!** We do not accept scrap metal or other metals.

