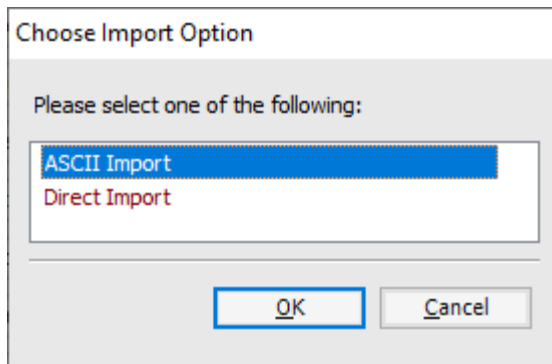


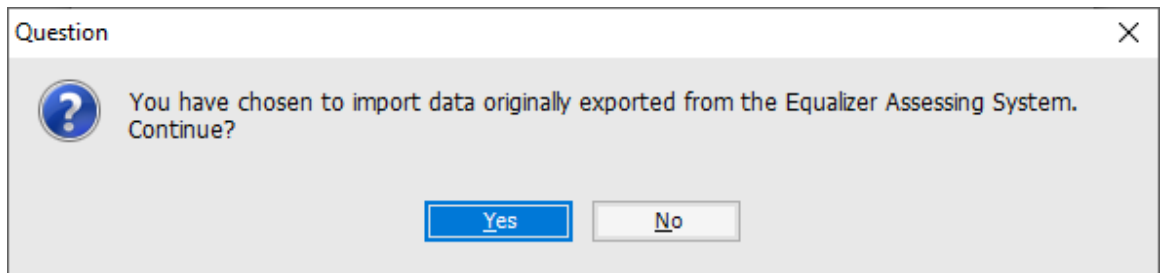
Assessing Import to Tax Database

Import Assessing information to the Tax Database

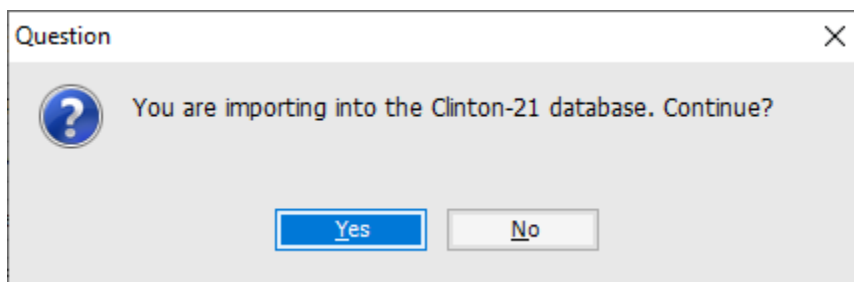
File ~ Import ~ Various Imports to Communicate with other Equalizer Software Systems... ~ Equalizer Assessing/Equalization Import...



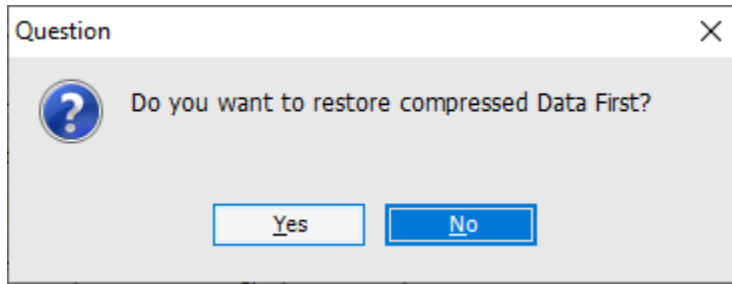
ASCII Import (unless you are directly linked to Assessing) ~ OK



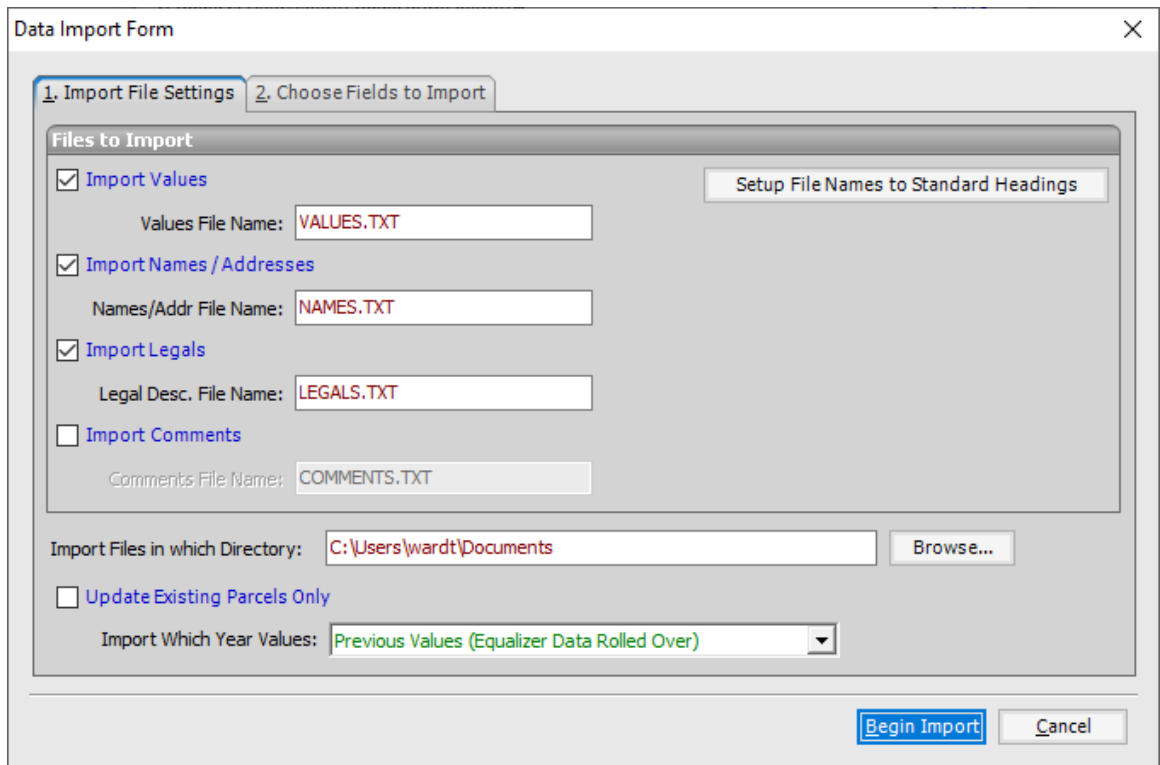
Yes



Verify your Database name ~ Yes



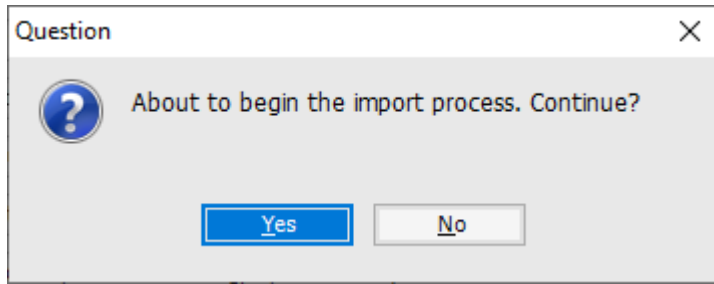
This answer will depend on how you receive and save the assessor provided data ~ ZIP file or .txt files



For the Summer (Village) Tax Roll, you will import Values, Names/Addresses and Legals

For the Winter Tax Roll you will import Names/Addresses ONLY

The Assessing database that you will importing from will be for NEXT year as they are working one year ahead of the tax roll. This is also the reason we import PREVIOUS Values.



If you selected Direct Import you will see this additional msg

