

# CLINTON COUNTY SHERIFF'S OFFICE

Serving Clinton County since 1839

## ANNUAL REPORT 2010



**Wayne Kangas, Sheriff**  
**Jack Phillips, Undersheriff**

1347 E. Townsend Road  
St. Johns, MI 48879  
989-224-5200

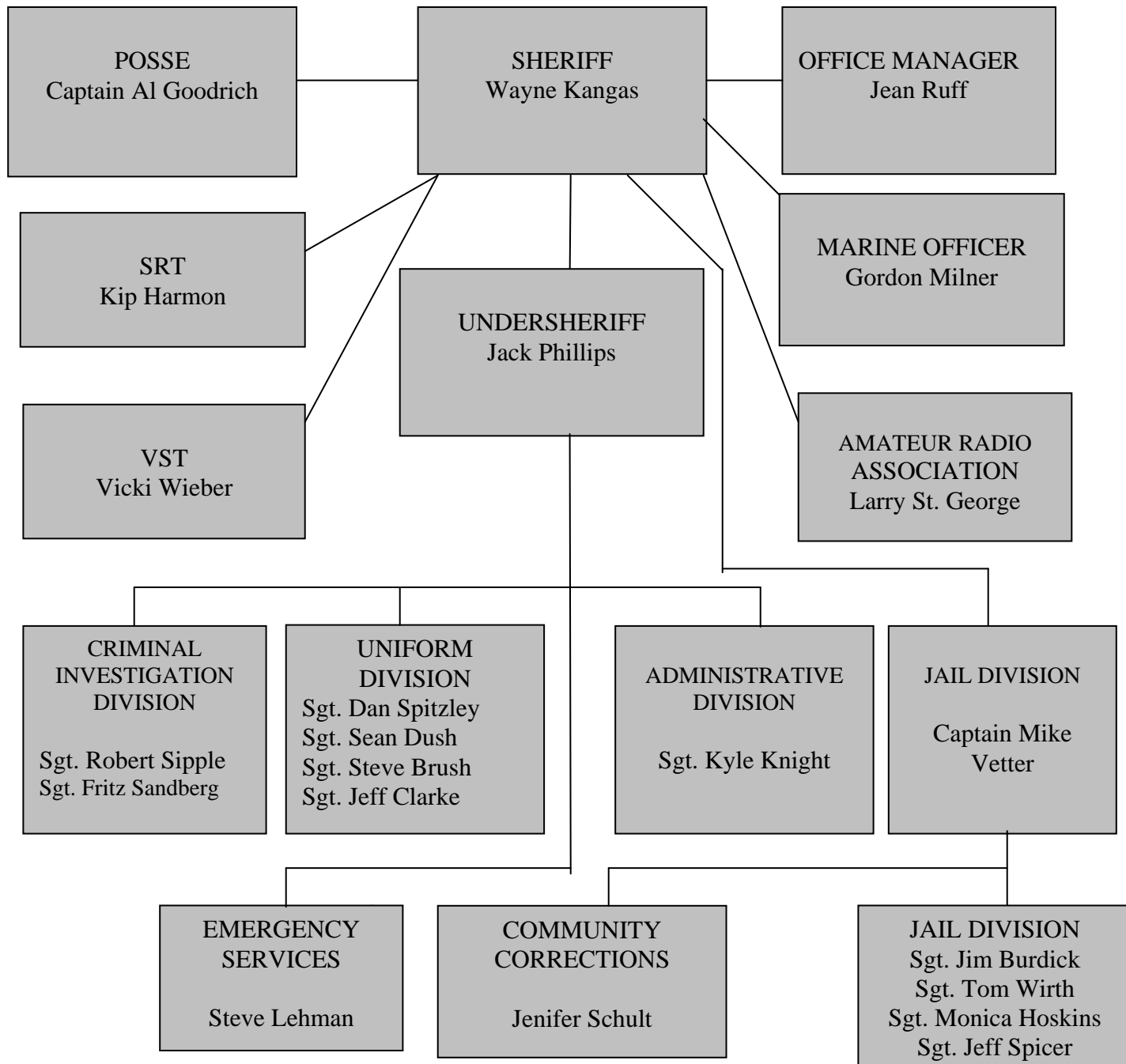
## **FOREWORD**

The Statistical data in this report came primarily from information Maintained by the Department's Administration Division, Central Dispatch and the Michigan State Police.

Additional information on the Content of this publication can be Obtained by contacting the Office Of Clinton County Sheriff, 1347 East Townsend Road, St. Johns, MI, 48879.

*“The mission of the Clinton County Sheriff’s Office is to provide for the protection and preservation of public safety and property; and the effective and efficient operation of a secure and humane correctional facility.”*

# OFFICE OF CLINTON COUNTY SHERIFF 2010



# Clinton County Sheriff's Office

## 2010 Annual Awards

Each year an awards presentation is held honoring civilians and deputies for their outstanding actions and investigations.

These awards honor the employee of the year, as well as Departmental Citations, Commendations, Certificate of Appreciation, Traffic Enforcement, Safe Driving Certificates and Civilian Commendations.

Employee of the year was selected by a panel representing a cross section of members of the Clinton County Sheriff's Office, chaired by the Undersheriff. This year's award was presented Maggie Wilson.

### 2010 DEPARTMENT AWARDS

#### EMPLOYEE OF THE YEAR

Maggie Wilson

#### CERTIFICATE OF APPRECIATION

Sue Lounds  
Miller Concrete  
Clinton County Road Commission

#### DEPARTMENTAL CITATION

Sergeant Steve Brush  
Deputy Scott Clarke

#### SAFE DRIVING

Sergeant Clarke  
Sergeant Dush  
Deputy McPherson  
Deputy Polash

#### DEPARTMENTAL COMMENDATION

Jeff Jones – Officer of the Year  
Deputy John Vance  
Deputy Scott Clarke  
Deputy Travis Polash  
Deputy Chris Crawford

#### LIFE SAVING AWARD

Derek Koenigsknecht  
Andrea Cupples  
Curt Hungerford

## **YEAR IN REVIEW**

### **2010**

Traffic enforcement remained a high priority and deputies issued 12,880 traffic citations in spite of losing Sergeant Dush, Deputy Rahall and the retirement of Deputy Lynch. This remains as one of the top sheriff's office in the state for traffic enforcement. Total traffic crashes were down 7%, also for the first time in over 50 years Clinton County did not have a fatal accident, total calls were over 28,000,

Housing inmates for outside jurisdictions totaled \$1,299,516 and increase of almost \$250,000 over the projected budget set at \$1,050,000. This was accomplished with our ability to increase revenues from Kalamazoo County, State Wide Security and the Federal Marshall's.

We established new procedures and protocols for school violence with all schools in Clinton County and updated their procedures for each of the schools.

Drug arrests were up 40% primarily due to marijuana availability because of the new law.

All core training for employees was completed as scheduled and we also provided core training to all jurisdictions within Clinton County.

Deputy Lynch and Deputy Rahall were replaced with two new officers, Deputy Bangs and Deputy Leasher, who are currently working on their own after completing probationary training.

The Sheriff's Office returned over \$80,000.00 from the Sheriff's budget that was not used.

**TRAFFIC ENFORCEMENT STATISTICS  
2006-2010**

	<b>2006</b>	<b>2007</b>	<b>2008</b>	<b>2009</b>	<b>2010</b>	<b>Total</b>	<b>Average</b>
Traffic Arrests	12,621	12,947	14,102	12,880	11,399	<b>63,949</b>	<b>12,890</b>
Verbal's	5,135	5,225	5,174	4,822	5,015	<b>25,371</b>	<b>5,074</b>
Traffic Stops	15,787	16,071	17,883	16,645	15,490	<b>81,876</b>	<b>16,375</b>
Drug Arrests	164	162	122	107	153	<b>708</b>	<b>142</b>
Driver Suspended	318	652	656	600	698	<b>2,924</b>	<b>585</b>
Drunk Driving	237	236	244	192	198	<b>1,107</b>	<b>221</b>
Seat Belts	923	875	669	740	244	<b>3,451</b>	<b>690</b>

**TRAFFIC CRASH STATISTICS  
2006-2010**

	<b>2006</b>	<b>2007</b>	<b>2008</b>	<b>2009</b>	<b>2010</b>	<b>Total</b>	<b>Average</b>
Property Damage	549	595	643	504	546	<b>2,837</b>	<b>567</b>
Personal Injury Accident	173	173	145	127	110	<b>728</b>	<b>146</b>
Fatal Accidents	3	6	6	4	0	<b>19</b>	<b>4</b>
Car Deer	957	957	956	1,058	917	<b>4,845</b>	<b>969</b>
<b>TOTAL</b>	<b>1,682</b>	<b>1,731</b>	<b>1,750</b>	<b>1,693</b>	<b>1,573</b>	<b>8,429</b>	<b>1,686</b>

**COMPLAINT ACTIVITY  
2006-2010**

	<b>2006</b>	<b>2007</b>	<b>2008</b>	<b>2009</b>	<b>2010</b>	<b>Total</b>	<b>Average</b>
Self Initiated	17,937	19,000	20,028	19,480	19,344	<b>95,789</b>	<b>19,157</b>
Calls for Service	12,257	12,616	13,131	12,189	8,772	<b>58,965</b>	<b>11,793</b>
<b>TOTAL</b>	<b>30,194</b>	<b>31,616</b>	<b>33,160</b>	<b>31,672</b>	<b>28,116</b>	<b>154,758</b>	<b>30,952</b>
Written Reports	3,619	3,792	3,724	3,423	3,426	<b>17,984</b>	<b>3,597</b>

<b>Violation of Controlled Substance Act Drug Arrests by Township 2006-2010</b>	
Bath	9
Bengal	5
Bingham	116
Dallas	23
DeWitt	179
Duplain	7
Eagle	96
Essex	10
Greenbush	85
Lebanon	3
Olive	52
Ovid	25
Riley	3
Victor	15
Watertown	82
Westphalia	7
	<b>717</b>

<b>Drunk Driving Arrests By Township 2006-2010</b>	
Bath	25
Bengal	19
Bingham	154
Dallas	41
DeWitt	168
Duplain	24
Eagle	178
Essex	21
Greenbush	111
Lebanon	19
Olive	88
Ovid	51
Riley	23
Victor	30
Watertown	145
Westphalia	32
	<b>1129</b>

**JAIL REVENUE  
2006-2010**

	<b>Actual 2006</b>	<b>Actual 2007</b>	<b>Actual 2008</b>	<b>Actual 2009</b>	<b>Actual 2010</b>
Transport Inmates	1,371	926	1,051	1,412	1,279
Work Release Room & Board	9,055	13,875	10,835	18,770	26,115
Work Release Meals	1,721	1,505	1,114	180	134
CL CO Inmate Room & Board– Direct	1,680	1,190	15,582	560	735
CL CO Inmate Room & Board Mid Michigan Credit Bureau	76,135	60,570	55,165	44,707	31,863
Lodge Prisoners	1,293,516	1,227,034	1,360,185	1,143,775	1,307,772
Jail Medical Reimburse – Direct	28,058	17,600	21,994	25,069	32,510
Jail Medical Reimburse – Mid Michigan Credit Bureau	2,060	1,748	1,451	669	710
Jail Inmate Telephone	67,393	66,170	68,555	56,741	72,248
<b>TOTALS</b>	<b>1,480,989</b>	<b>1,390,618</b>	<b>1,535,932</b>	<b>1,291,883</b>	<b>1,473,366</b>



## **OFFICE OF CLINTON COUNTY SHERIFF**

### **2011 GOALS**

- Maintain our existing contract with the State Department of Corrections for housing D.O.C. inmates and explore new opportunities for additional inmate housing.
- Continue to maintain a high level of efficiency and effectiveness with our Traffic Safety initiative and seek Traffic Safety Grants.
- Work with all Law Enforcement Agencies within Clinton County to explore opportunities to share resources to maximize efficiency and effectiveness for everyone.
- Explore New Technologies to increase efficiency and effectiveness in delivering Law Enforcement Services, Expand our use of Forensic Computer Analysis to address emerging criminal activity.
- Increase our involvement and effectiveness in Crime Prevention initiatives with the public.

## **VICTIM SUPPORT TEAM**

The Victim Support Team is a group of dedicated volunteers trained to assist Police Officers in dealing with victims to provide immediate crisis intervention in the event of sudden, unexpected death that occurs due to car crash, suicide, fire, homicide, illness, drowning, or other traumatic incidents. The Advocates strive to offer comfort, compassionate support and sympathy to the surviving family members.

Each member of the VST spent 20-hours over a weekend to learn how to lend support to the victims of violent crimes and also assist families during the initial crisis. They are available 24 hours a day to assist police agencies within Clinton County. The team is responsible for their program costs including cellular phones, pagers and vehicle expense. They receive minimal financial support from the County. The team meets on a monthly basis and is supported by Sgt. Kyle Knight who is the Liaison Officer from the Sheriff's Office assigned to address training needs, operational evaluation and other organizational concerns.

Clinton County Victim Support Team Members: Vicki Wieber, Coordinator, Courtney Smith-Atkins, Aaron Baker, Sandy Billingsley, Amanda Burkett, Nicki Dabney, Peggy Haviland, Shelly Haviland, Katy Johnson, Louella Kingsbury, Barb Kolp, Judy Minner, Shelly Redman, Mary Simison, Terry Simison, Edwin Snook, Ellen Snook, Peg Vining and Wendy Ward.

## **VICTIM SUPPORT TEAM ACTIVITY SUMMARY**

<b>TYPE OF INCIDENTS</b>	<b>2010</b>
Homicide	0
Kidnapping Assault	0
Rape	0
Breaking and Entering	0
Suicide	3
Domestic	0
Fatal Accidents	1
Personal Injury Accidents	0
Death Notifications	12
House Fires	0
Hospital Calls	0
Court Appearance	0
Other Police Departments	0
Total callouts	16
Time spent on callouts	71

## ***SHERIFF'S POSSE*** **(Mounted Division)**

The Mounted Division is a deputized volunteer organization with prime responsibility to support Clinton Counties Law Enforcement effort through the Sheriff's Office. The role of the Mounted Division continues to evolve into a direct support function with primary focus on supporting the Clinton County Emergency Management Plan, pursuant to federal grant fund stipulations.

Annual goals for the Mounted Division focused upon training modules including: Incident Command Systems; Department Use of Force Policy; FEMA Certification; Firearms Field Training and Qualification; Law Enforcement Authority, Limitations, and Supervision Requirements Training ; Mounted Crowd Control and Field Training; CPR & First Aid Certification; Traffic Control Training; Search / Rescue, Meth Lab Information; Radio and Communications Training. The total amount of training for the unit was 719 hours.

In 2010, 32 members of the Mounted Division were involved in 93 work day functions. There were 38 events for 1810 hours and training events (in addition to unit administration) totaling 719 hours. In 2010, the Mounted Division donated more than 3600 hours of service and training to the County. In addition, the Mounted Division provided direct support to both the community and the Sheriff's Department by doing 17 rides along for 205 hours. Volunteer services included foot patrol, horse patrol, parades, training, administrative hours, and monthly general/board meetings. The Mounted Division also assisted Lansing PD and DeWitt Twp PD in searches for lost subjects. Members assisted in Active Shooter Training for Clinton County Law Enforcement. Additionally, in 2010 the Mounted Division donated several thousand dollars to local charities and the needy.





## Clinton County Emergency Communications Team 2010 Annual Report

The Clinton County Emergency Communications Team (ECT) (formerly known as the Clinton County Amateur Radio Public Service Corps) is a volunteer division of the Clinton County Sheriff's Office that provides emergency communications services for area responders. The team is composed of 8 volunteers highly trained in emergency communications. All members are licensed amateur radio operators.

### 2010 Accomplishments:

- Sponsored the National Weather Service's "SKYWARN" storm spotter training class at St. Johns Middle School for 40 citizens and responders.
- Acquired a Raytheon ACU-M Interoperable Communications System to allow different radio systems in the region to work with one another.
- Upgraded the UHF radio repeater system with brand new equipment and antenna atop the Central Dispatch tower at 310' this system allows for county-wide backup emergency communications coverage with hand held radios.
- Partially implemented the D-STAR digital radio repeater system to act as a backup communications system between regional Emergency Operations Centers.

### 2011 Goals:

- Train with regional partners with the ACU-M equipment
- Fully implement D-STAR by acquiring an internet connection for the equipment.

## **CLINTON SPECIAL RESCUE TEAM**

The Clinton County Special Rescue Team (SRT) had a roster of 32 volunteer personnel for 2010.

The SRT responded to 4 call outs for the year:

- June: Lake Victoria overturned pontoon boat, victims were rescued w/o injury, boat towed to shore
- July: Alward Lake for a boat adrift in the middle of the lake. Cmdr Harman investigated the boat, it appeared to have been unoccupied by the way the equipment was discovered. An area canvas was completed by SRT and CCSO deputies, no additional was discovered
- July – Sleepy Hollow State Park for 2 lost bikers suffering from heat problems. Subjects were located with no serious injuries.
- Sept: DeWitt Twp Solon Rd Adult Care Facility, 82 y/o Alzheimer's patient walked away from the home at approximately 0130 hrs, temp 28 degrees. Subject was located at approximately 0730 hrs coming out of a shed approximately ½ mile away

### **EQUIPMENT**

The SRT is in the process of replacing its 40' Semi Tractor-trailer with a Ford F-550 cargo truck this vehicle will be more reliable and will allow for faster, safer and more effective response.

### **TRAINING:**

The SAR unit is currently undergoing training to improve the team's capability. Capt. Lewis conducted a NASAR awareness-level ground SAR course for the team. Commander Harman Capt Lewis and Lt. St. George completed SAR Manager training and certification. An operations-level SAR course is scheduled for March 2011 for both the SRT and Mounted Division.

Capt Lewis conducted con space review for certified operators.

Commander Harman taught an Ice Rescue re-certification class in 2010. Practical certification and re-certification training was held at the Howe Rd. gravel pit.

Lt. St. George taught a GPS refresher course for SAR operations in December.

The underwater rescue and recover unit completed the ongoing merger into the Capital Area Dive Team. The team is comprised of divers from Clinton, Eaton and Ingham Counties and the Lansing PD. The CADT responded to 5 evidence recoveries and 1 body recovery

### **PROMOTIONS:**

Ryan Acre was promoted to Sgt in charge of medical responsibilities.

### **ADDITIONAL:**

Cmdr Harman and Capt Lewis reviewed and updated the policies and guidelines

## GOALS FOR 2011 CLINTON COUNTY SPECIAL RESCUE TEAM

- Recruit additional personnel for the team
- Complete certification class for ice rescue
- Complete re-certification class for personnel trained in ice rescue
- Mutual aid training with other underwater rescue/recovery teams
- Complete class in confined space rescue for untrained personnel
- Complete refresher class in confined space rescue
- Complete Awareness and Operations Rope class
- Complete ongoing Operations level SAR Ground Search training
- Certify team members in Tech-level SAR Ground Search Operations
- Continue training with Clinton County Mounted Division in Land Search techniques

# CLINTON COUNTY COMMUNITY CORRECTIONS 2010

Clinton County has participated in Michigan's Community Corrections Act (*Public Act 511 of 1988*) since 1990. This Act supply's counties with funding and resources to decrease the prison commitment rates of felons, improve local jail utilization, and reduce the number of repeat offenders. The goal of the Clinton County Community Corrections program is to preserve public safety while providing offenders with rehabilitative opportunities through participation in jail-based programs and the potential to earn days off of their sentence.

## Significant Accomplishments of the Community Corrections Program for 2010:

- ❖ The Community Corrections Advisory Board approved a new Ineligible Felony List, which reduced the number of felonies that automatically disqualified inmates, allowing many more to participate in programming.
- ❖ The State of Michigan funded the program with close to \$80,000.
- ❖ Programs such as Screening and Assessment, Case Management, Community Service Work, Cognitive Behavioral Classes, Inpatient Substance Abuse Treatment, and Substance Abuse Assessment and Treatment were provided this year through the support of the State of Michigan funding.
- ❖ Reducing the number of jail bed days served by local inmates made it possible to rent out an additional 250 jail bed days to other counties and jurisdictions.
- ❖ This year over 70 inmates participated in the Cognitive Behavioral Classes, continuing our goal to provide the program to more individuals.
- ❖ Trustee labor was provided to various governmental and non-profit agencies throughout the county for numerous events, including the County's clean-up days.
- ❖ The continuing partnership between the Community Corrections/Sheriff's Office and Community Mental Health provided hundreds of hours of services and enhanced the delivery of professional mental health and substance abuse assessments and treatments to jail inmates.

## **TRAINING**

The Clinton County Sheriff's Office has in place a training program for all staff members to keep abreast of the changes taking place in the criminal justice field to enable them to perform their duties in meeting criminal justice standards and requirements.

Our three phase training program involves the following process:

1. **Sheriff's Office Core Training:** Training that is identified and developed using a Training Committee comprised of personnel from each division within the Sheriff's Office. An analysis of each job responsibility and duty is reviewed to identify the essential skills, knowledge and abilities required to perform their duties in an effective and efficient manner.
2. **Clinton County Law Enforcement Core Training:** Heads of each law enforcement agency in Clinton County working together to implement common training for the law enforcement officers in Clinton County. The concept to minimize training costs is met by utilizing trainers from each of the agencies to provide quality training, which is evaluated by the attendees and agency heads.
3. **Enhancement Training:** Additionally designated members of the Sheriff's Office are sent to courses that certify them as instructors on specific topics. Upon completion of their training they have the responsibility to provide instruction to other members of the Sheriff's Office in their area of expertise.

### **2010 CORE and Enhancement Training**

PBT – Life Loc	Ethnics and Professionalism
FOIA Management	Taser
Precision Driving	CBRNE Defensive Opps
Mental Health	Mobil Field Force
Armorer's Course	Incident Response to bombings
Firearms Instructor Courses	
Accident Investigation	
Hostage Negotiations	
Interview Techniques	
Laser & Radar Operator	
Marine School	
Evidence Training	
Criminal Investigation	
Records Management - OSSI	
Control & Defensive Tactics	
Forensic Interview Techniques	
WMD Terrorism Awareness	
Radiological Nuclear Awareness	





## Clinton County Office of Emergency Management

- **School Safety Planning** – During 2010, the Office of Emergency Management participated on the St. Johns School Safety Alliance, and in that process reviewed and revised the entire county-wide School Emergency Response flipcharts. Some of the sections were: Intruder/Weapons, Bomb/Explosive/Telephone Threats, Disasters, Chemical Accidents, and more. The changes were provided to each of the 7 school districts to incorporate into the flipcharts they have in each building.
- **Homeland Security Grants** - The Clinton County Office of Emergency Management continued its' participation on the Region One Homeland Security Planning Board, through which a portion of the Homeland Security funding is funneled to the local emergency management programs. 2010 contained three homeland security grant performance periods, the end of the 2007 HSGP Grant, the 2008 HSGP grant, as well as the start of the 2009 HSGP grant. The combined awards in those three grants totaled more than 298,500.00. Some of the major purchases in 2010 were;
  - Rescue style response vehicle for SRT (Ford F550)
  - ICU-M allows several different types of radios to communicate with each other, vitally important in a response involving multiple agencies from multiple jurisdictions.
  - Optics for the Special Operations Team
  - Upgraded handheld radios for Response Managers
  - Handheld radios for Special Operations backup
- **Emergency Preparedness** – Steve Lehman and Larry St. George served as Chairperson and Vice-Chair of the Do1thing planning initiative. Mandated planning for Special Populations, their caregivers and advocacy groups were incorporated into the website and the information provided there. Partners in the Special Populations community agreed to provide insight through a newly created sub-committee. The Do1thing Board gave a break-out session presentation at the Fall Conference in October to assist future partners in the Emergency Management community.
- **First Responder Training** – Clinton County Emergency Management conducted three major sessions of First responder training in 2010. NIMS 300 and 400 level classes targeted both middle management responders as well as Command and General Staff personnel. Sessions were held in June, August and October to best reach responders on all shifts and schedules.

## **CENTRAL RECORDS**

Central Records has the responsibility to respond to all requests for Administrative Services for the public. They are directly responsible for registering and processing all visitors to the confined areas of the jail. **They respond to over 50,000 incoming calls to the Sheriff's Office,** respond to requests for information, process all criminal complaints, criminal histories for other agencies, compile information in the criminal records management system, fingerprint responsibilities for all CCW permits, pre-employment and firearm inspections. They provide information on a variety of subjects to the general public and perform a critical support service to the public and the Sheriff's Office.



## CENTRAL RECORDS ACTIVITY SUMMARY

<b>Purchase Permits</b>	<b>2010</b>	<b>Revenue</b>
Explosive Permits	0	
Individual Handgun Permits	1,716	
Dealer Permits	88	
<b>Handgun Registrations</b>		
Individual Registrations	1,522	
Dealer Registrations	89	
<b>Other Services</b>		
CCW & Employment Fingerprinting	820	\$12,300
Notary Service Requests	497	\$1,490
Police Report Requests	1,009	\$5,046
Abandoned Vehicles Processed	42	
Individuals Screened for Entry into Jail	1,844	
Subpoenas Processed	1,255	
Sheriff Sales (mortgage)	298	\$14,900
Personal Protection Orders	141	

## **ANIMAL CONTROL**

The Clinton County Animal Control consists of two full-time employees. Their responsibilities are investigating complaints of dogs and farm animals running at large, handling lost and found pets, investigating animal bites, and investigating animal welfare and neglect complaints. They are also responsible for monitoring and caring for the Clinton County Animal Shelter. In 2010 there were 5,974 dog licenses sold in Clinton County.

- 1,220 Complaints
- 538 Lost & Found Animals
- 108 Animal bites investigated
- 89 Citations (dog running at large or unlicensed dogs)
- 35 Kennels inspected and licensed

Listed below is the revenue for Animal Control:

- \$121,710 Dog License fees
- \$1,800 Kennel License fees
- \$5,355 Other Fees
- 611 Animals picked up

## **UNIFORM DIVISION**

The Uniform Division is responsible for providing direct law enforcement services to all county residents. They have the primary responsibility to provide traffic enforcement on all secondary county roads, in conjunction with traffic enforcement on State highways and expressways.

In addition, they respond to all emergency calls for service, provide court security, serve civil process, transport prisoners, and conduct safety education programs, along with a variety of other enforcement responsibilities.

The deputy's continue to function as one of the most effective traffic enforcement units within the State of Michigan. During the past year, deputy's issued 11,399 traffic citations. They also arrested 198 drunk drivers, issued 244 seat belt violations and 151 subjects were arrested for possessing and selling narcotics. The Sheriff's Office Crash Investigation Team investigated 5 crashes, 0 fatal, 4 serious injuries and assisted other agencies with 4 crashes. The Clinton County Sheriff road patrol ranks in the top five for all Sheriff's Department on a consistent basis for traffic enforcement. Over the past several years, one of our officers has been recognized as the top O.U.I.L. Enforcement Officer for Sheriff's Offices statewide.

Every Deputy has been trained in basic traffic accident investigation and we have three officers certified as traffic accident Reconstructionists. Additionally, the division has certified Laser Speed Measurement, Preliminary Breath Test, Firearm and Pressure Point Control Tactics Instruction. We have officers trained as Crime Scene Tech, Hostage Negotiators, Firearms Instructors, Laser Instructors, Defensive Tactics Instructors, PBT Instructors, CPR, A.E.D. Instructors, Taser, Pepper ball Instructors and Simunition Instructors.

The deputies continue to operate as single person cars, allowing us to maximize our Law Enforcement efforts. The assignment of a single officer to a vehicle on night shifts is very rare in law enforcement agencies today. We are very fortunate to have a staff of highly trained officers committed to public service and who perform their responsibilities in a highly effective manner.

<b>UNIFORM CRIME REPORT – ACTUAL OFFENSES</b>		
		<b>2010</b>
CSC		13
Robbery		0
Assault/Stalking		26
Domestic Assault		84
Arson		2
Breaking and Entering		80
Homicide		0
Kidnapping		0
Larceny		120
Stolen Vehicles		8
Fraud/NSF		47
Retail Fraud		13
Malicious Destruction of Property		76
OWI		198
VCSA		151
Accident Reports		1,573
All Others (warrants, driving offenses, liquor violations, etc.)		1,251
	<b>TOTAL</b>	<b>3,642</b>
	<b>UNIFORM DIVISION STATS</b>	
		<b>2009</b>
		<b>2010</b>
• Calls for service	12,189	8,772
• Self Initiated Calls	19,480	19,344
• Total Calls Responded to	31,672	28,116
• Written Reports generated by responses	3,423	3,426
	<b>Traffic Crashes</b>	
		<b>2009</b>
		<b>2010</b>
• Car/Deer	1,058	917
• Property Damage	504	546
• Personal Injury	127	110
• Fatal	4	0
	<b>Total Accidents</b>	<b>1,693</b>
		<b>1,573</b>

## DETECTIVE DIVISION

During 2010 the Detective Bureau Investigated a larger than usual volume of fraud complaints that included:

- Credit Card Fraud
- Identity Fraud
- Telephone Scams
- Internet Scams
- Mail Scams

In most of the telephone, internet and mails scam cases the suspects are usually based in Countries outside of the United States requiring considerable time and resources to attempt to identify suspects in places like Nigeria, and various locations throughout the British West Indies.

The Detective Bureau took a lead investigative role in a multi jurisdictional investigation with the use of our departmental electronic surveillance equipment resulting in the arrest of two subjects responsible for committing over 50 daytime home invasions in four Michigan Counties including nine residences in Clinton County. Eight additional subjects were identified as part of this organization and face criminal charges in other Counties that include receiving and concealing stolen property and fencing stolen property.

The area of Cyber Crime and Computer Forensics has continued to play an increasing role in the daily operations of investigations. Personnel are required to obtain, categorize, store and interpret these items stored on digital media that officers come into contact with on a daily basis. The Sheriff's Office performs a great deal of these tasks, not only for its own organization but for other organizations and jurisdictions within the County.

Although training has been extensive, the outcome of criminal proceedings has been very successful. Updating equipment utilized in these types of cases is necessary and ongoing but many of these associated costs are being paid through grants to mitigate the cost to the County allowing for no disruption of the best possible service to the community.

Several Arrests/Investigations of noteworthy cases that have happened recently are:

- Surreptitious video and audio taping of a minor female child in the privacy of her bedroom by an adult perpetrator.
- Adult perpetrators "chatting" with minors on-line and arranging a specified location to engage in sex.
- Analysis of cell phone data utilized in "sexing" cases and fraudulent scams.
- Email analysis of fraud cases.
- Computer analysis of Parole Violators in reference to additional child pornography charges.

## MARINE PATROL

The primary goals of the Marine Program is to provide boater safety for 12-16 year olds, conduct inspections of boat liveries, provide for enforcement of the Marine Safety Laws and to address the Sheriff's responsibility for the recovery of all drowned bodies as mandated by P.A. 139, 1947.

Funding for this program is through a grant from the Michigan Department of Natural Resources. Funding provides for a 75% match to provide for reimbursement for officer's wages, fringe benefits, and equipment needs, supplies and materials. Equipment for the program consists of a 14-ft. boat, trailers, 25-hp motor and associated equipment.

Program responsibilities are assigned to a part time deputy. The deputy is a certified police officer also certified as a Boating Safety Instructor by the Michigan Department of Natural Resources. Duties for this program are conducted during the period between Memorial Day and Labor Day, with enforcement patrols concentrated on weekends and holidays.

- During the past year, 154 students were trained and certified in Boat Safety.
- Three liveries were inspected along with 4 boats.





## JAIL DIVISION

- During 2010 the Clinton County Jail booked in a total of 3,191 individuals. Of that number 2,556 were male and 635 were females
- The average daily count for the year was 88 locals and 95 boarders for a total of 183 averages per day.
- The kitchen staff prepared a total of 201,480 meals with an average cost of \$1.06 per meal.
- The county jail continues to provide inmate programs to include religion, substance abuse, anger management, recreation and parenting classes. The jail has been able to maintain the same level of Mental Health Services through Community Mental Health.
- For the 10th year in a row the county jail has a 100% compliance inspection from both the Michigan Department of Corrections and the Federal Bureau of Prisons.

<b>2010 JAIL REVENUE</b>	
Out County Inmate Housing	\$1,299,516.00
Mid-Michigan Credit Bureau – Housing and Medical	\$32,573.00
Work Release	\$26,149.00
Inmate Phone System	\$72,031.33
Social Security Reimbursement for 2010	\$11,800.00
Housing and medical collected at the jail	\$44,310.45
Transport to prison	\$1,278.75
Bonding Fee	\$2,430.00
Booking Fee	\$23,500.00
<b>Total</b>	<b>1,513,588.53</b>