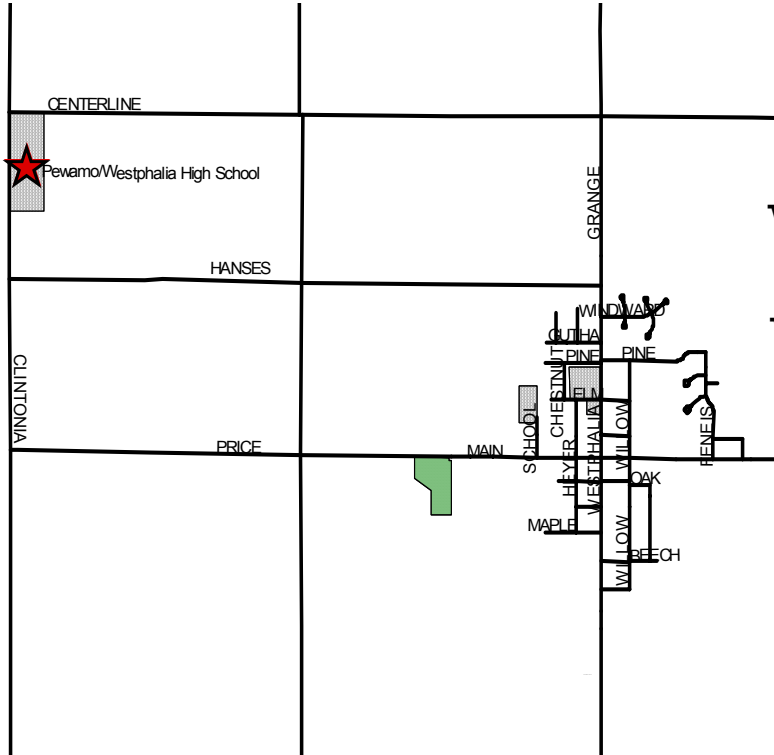


PEWAMO/WESTPHALIA RECYCLING DROP-OFF CENTER GUIDELINES



The Pewamo/
Westphalia drop-off site
is located at Pewamo/
Westphalia High School
on Clintonia Rd. The
drop-off site is a self
serve center open
24-Hours.

Open 24-Hours



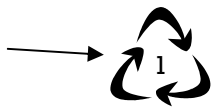
Please see other side of flyer
for items accepted for
drop-off and how to properly
prepare them.



→
For more information about
the drop-off center, please
contact Clinton County
Department of Waste
Management at 989-224-5186
or at
waste@clinton-county.org.

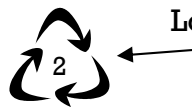
**PETE or PET #1
Plastic Bottles &
Jars**

Please remove lid and lightly rinse containers. Look for symbol on bottom of container.



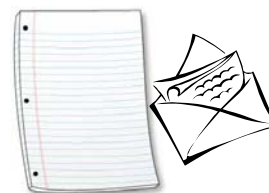
**HDPE #2 Plastic
Bottles & Jugs**

Must have a seam on the bottom and sides. All colors accepted. **SORRY!** No motor oil or pesticide containers. Look for symbol on bottom of container.

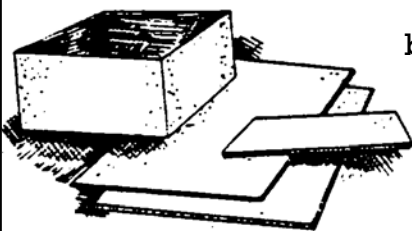


Newspaper & Inserts
No separating or sorting required. Do not put newspapers in plastic bags!

Mixed Office Papers
Includes white, notebook, colored paper and envelopes.



Corrugated Cardboard & Boxboard
Must have wavy corrugation in middle.



Sorry! No boxboard or wax coated boxes accepted. Remove all packaging materials.

Phonebooks



**Magazines &
Glossy
Catalogs**



Brown Paper Bags

Sorry! No wax coated bags. Place in newspaper bin.



**Empty!! Aerosol
Cans**

Please remove lids.



**Clear & Brown glass jars
and bottles ONLY!**

Remove caps and lids and place those in garbage. Labels may be left on and lightly rinse container. **SORRY!** We do not accept drinking glasses, light bulbs, window glass, mirrors, ceramics, dishes and cookware.

**Metal Cans &
Aluminum**

Steel, tin, aluminum and bi-metal cans and aluminum foil. Labels may be left on and containers need to be lightly rinsed. **SORRY!** We do not accept scrap metal or other metals.

