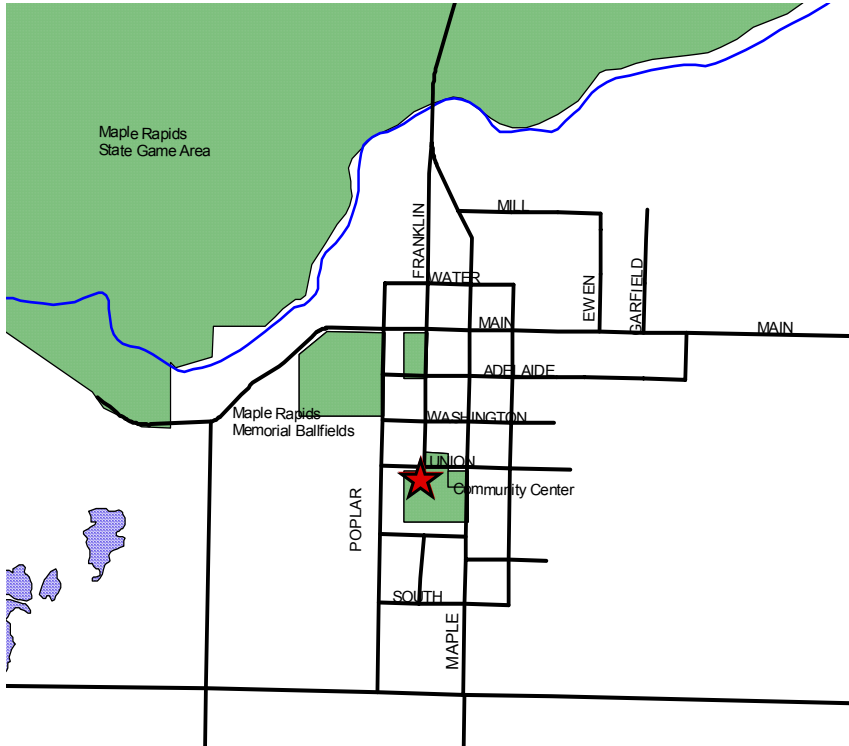


MAPLE RAPIDS RECYCLING DROP-OFF CENTER GUIDELINES



The Maple Rapids drop-off center is located on Union St. next to the Community Center. The drop-off site is a self serve center open 24-Hours.

Open 24-Hours



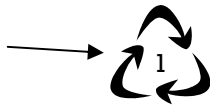
Please see other side of flyer for items accepted for drop-off and how to properly prepare them.



→
For more information about the drop-off center, please contact Clinton County Department of Waste Management at 989-224-5186 or at waste@clinton-county.org.

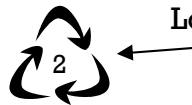
**PETE or PET #1
Plastic Bottles &
Jars**

Please remove lid and lightly rinse containers. Look for symbol on bottom of container.



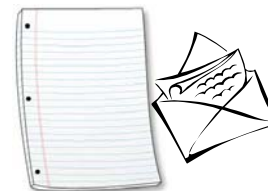
**HDPE #2 Plastic
Bottles & Jugs**

Must have a seam on the bottom and sides. All colors accepted. **SORRY!** No motor oil or pesticide containers. Look for symbol on bottom of container.



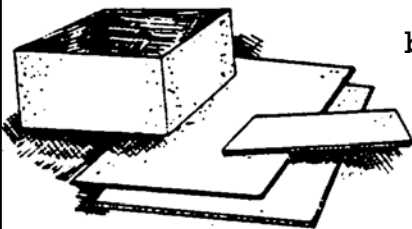
Newspaper & Inserts
No separating or sorting required. Do not put newspapers in plastic bags!

Mixed Office Papers
Includes white, notebook, colored paper and envelopes.



Corrugated Cardboard

Must have wavy corrugation in middle.

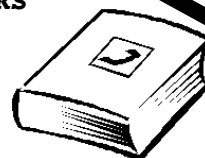


Sorry! No boxboard or wax coated boxes accepted. Remove all packaging materials.

Phonebooks



**Magazines &
Glossy
Catalogs**



Brown Paper Bags

Sorry! No wax coated bags. Place in newspaper bin.



**Empty!! Aerosol
Cans**

Please remove lids.



**Clear & Brown glass jars
and bottles ONLY!**

Remove caps and lids and place those in garbage. Labels may be left on and lightly rinse container. **SORRY!** We do not accept drinking glasses, light bulbs, window glass, mirrors, ceramics, dishes and cookware.

**Metal Cans &
Aluminum**

Steel, tin, aluminum and bi-metal cans and aluminum foil. Labels may be left on and containers need to be lightly rinsed. **SORRY!** We do not accept scrap metal or other metals.

